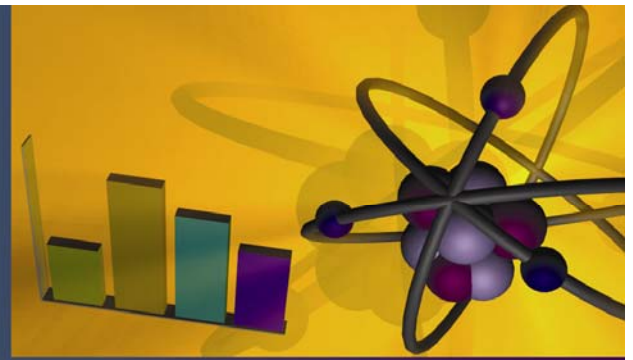


Nuclear Performance

September 2009



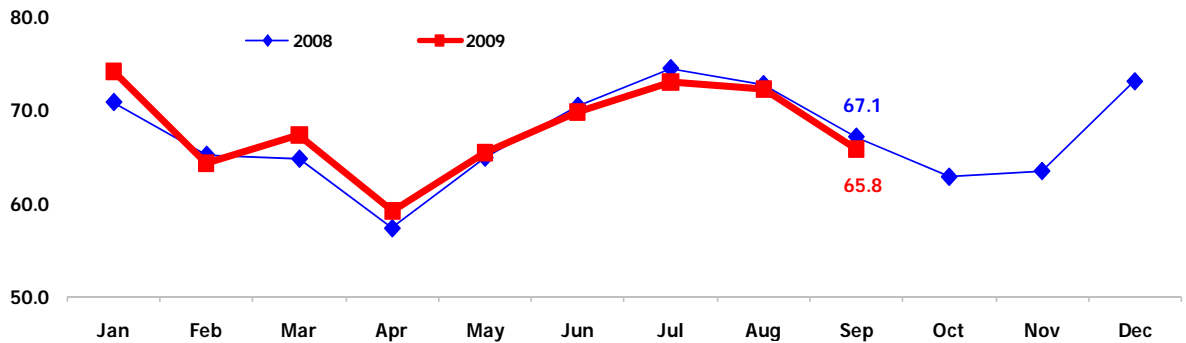
Summary of Nuclear Plant Production Data

- For September 2009, nuclear generation was 65.8 billion kilowatt-hours, almost 2 percent lower than the nuclear generation in September 2008. The average capacity factor for September 2009 was 91.1 percent compared to 92.5 percent in September 2008.
- Through September, year-to-date nuclear generation was 610.9 billion kilowatt-hours compared to 607.0 bKWh for the same period in 2008 and 607.8 bKWh in 2007 (the record year for nuclear generation).
- As of October 27, 27 nuclear units either completed or were in refueling outages for the Fall 2009 season compared to 24 units at the same time during 2008. One unit has been in extended shutdown since September 2008.



1776 I Street, NW
Suite 400
Washington, DC
20006-3708
www.nei.org

Monthly Nuclear Generation (BkWh)



Year	Capacity Factor (%)		Generation (BkWh)	
	September	Year to Date	September	Year to Date
2007	93.6	92.5	67.6	607.8
2008	92.5	91.6	67.1	607.0
2009	91.1	93.0	65.8	610.9

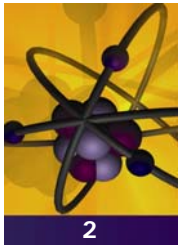
Type	BWR					BWR Total	PWR					PWR Total
	2	3	4	5	6		B&W	CE	W2	W3	W4	
# of Units	2	6	19	4	4	35	7	14	6	13	29	69

Capacity Factors - Percent

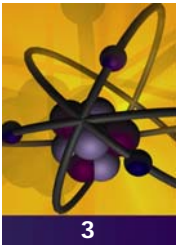
September	100.2	98.2	89.8	91.8	88.6	91.9	98.4	88.4	85.2	101.4	87.3	91.1
Year-to-date	89.6	91.5	90.2	87.0	90.8	90.1	99.1	92.8	97.0	95.6	93.1	94.4

Refueling Outages Duration - Average Days from 2005 to Present

18 Mo. Cycle	-	-	30.6	-	31.2	30.8	45.1	53.9	39.9	38.2	37.0	41.3
24 Mo. Cycle	28.8	28.4	36.0	30.4	48.4	34.0	37.0	29.8	-	-	26.2	31.4



Unit	Net MWe	Capacity Factor (%)		Generation (BkWh)		Last Refueling Outage		
		Month	YTD	Month	YTD	Start Date	End Date	Outage Duration (Days)
Arkansas Nuclear One 1	843	100.8	98.0	0.61	5.41	10/26/08	12/11/08	47
Arkansas Nuclear One 2	995	16.1	87.8	0.12	5.72	9/2/09	9/24/09	23
Beaver Valley 1	892	101.6	88.9	0.65	5.20	4/20/09	5/21/09	32
Beaver Valley 2	846	105.9	106.1	0.64	5.88	10/12/09	Current	15
Braidwood 1	1,178	100.3	92.8	0.85	7.17	3/30/09	4/19/09	21
Braidwood 2	1,152	100.4	98.2	0.83	7.41	10/12/09	Current	15
Browns Ferry 1	1,065	100.3	91.1	0.77	6.36	10/25/08	11/30/08	37
Browns Ferry 2	1,104	97.0	75.1	0.77	5.43	4/26/09	6/8/09	44
Browns Ferry 3	1,105	71.3	94.2	0.57	6.82	3/18/08	5/14/08	58
Brunswick 1	938	65.9	96.9	0.45	5.95	3/14/08	4/27/08	45
Brunswick 2	937	66.6	71.1	0.45	4.36	2/28/09	4/20/09	52
Byron 1	1,164	42.3	94.8	0.35	7.23	9/14/09	10/8/09	25
Byron 2	1,136	101.0	101.5	0.83	7.55	10/5/08	10/23/08	19
Callaway	1,190	100.0	95.9	0.86	7.47	10/10/08	11/6/08	28
Calvert Cliffs 1	873	99.9	98.4	0.63	5.63	2/22/08	3/12/08	20
Calvert Cliffs 2	862	99.8	90.9	0.62	5.13	2/23/09	3/16/09	22
Catawba 1	1,129	101.7	102.2	0.83	7.56	5/3/08	6/19/08	48
Catawba 2	1,129	102.3	85.7	0.83	6.34	3/7/09	4/18/09	43
Clinton	1,043	95.0	101.3	0.71	6.92	1/11/08	2/4/08	25
Columbia 2	1,131	67.2	60.3	0.55	4.47	5/9/09	6/20/09	43
Comanche Peak 1	1,150	100.0	104.2	0.83	7.85	9/27/08	10/16/08	20
Comanche Peak 2	1,150	100.0	100.6	0.83	7.58	10/8/09	Current	19
Cooper	758	79.8	97.2	0.44	4.83	9/26/09	Current	31
Crystal River 3	838	85.5	98.1	0.52	5.39	9/26/09	Current	31
Davis Besse	879	103.4	97.0	0.65	5.59	12/29/07	1/31/08	34
Diablo Canyon 1	1,122	83.3	76.6	0.67	5.63	1/26/09	3/23/09	57
Diablo Canyon 2	1,118	87.1	93.1	0.70	6.82	10/4/09	Current	23
Donald C. Cook 1	1,009	0.0	0.0	0.00	0.00	3/25/08	4/29/08	36
Donald C. Cook 2	1,060	100.0	80.7	0.76	5.61	3/25/09	4/29/09	36
Dresden 2	867	99.8	99.9	0.62	5.68	10/29/07	11/18/07	21
Dresden 3	867	99.3	98.6	0.62	5.60	11/3/08	11/19/08	17
Duane Arnold	580	103.2	89.0	0.43	3.38	2/2/09	2/28/09	27
Edwin I. Hatch 1	876	100.0	92.5	0.63	5.31	2/3/08	3/11/08	38
Edwin I. Hatch 2	883	100.3	57.3	0.64	3.32	2/9/09	5/22/09	103
Fermi 2	1,122	93.3	83.2	0.75	6.12	3/28/09	4/29/09	33
Fort Calhoun	482	102.2	102.9	0.35	3.25	4/19/08	6/16/08	59
GINNA	498	100.0	109.5	0.36	3.57	9/14/09	10/2/09	19
Grand Gulf 1	1,268	97.7	99.0	0.89	8.22	9/21/08	10/20/08	30
H.B. Robinson 2	710	103.8	104.3	0.53	4.85	9/25/08	11/5/08	42
Hope Creek 1	1,061	112.0	101.3	0.86	7.04	4/11/09	5/2/09	22
Indian Point 2	1,020	98.8	99.4	0.73	6.64	3/23/08	4/19/08	28
Indian Point 3	1,025	101.8	80.2	0.75	5.39	3/11/09	4/19/09	21
James A. Fitzpatrick	852	98.5	99.0	0.60	5.53	9/14/08	10/9/08	26
Joseph M. Farley 1	851	100.1	86.4	0.61	4.81	4/3/09	5/6/09	34
Joseph M. Farley 2	860	99.6	96.4	0.62	5.43	10/19/08	11/21/08	34
Kewaunee	556	82.0	98.1	0.33	3.57	9/26/09	10/22/09	27
La Salle 1	1,118	99.8	97.9	0.80	7.17	2/3/08	2/27/08	25
La Salle 2	1,120	100.2	90.2	0.81	6.62	1/19/09	2/9/09	22
Limerick 1	1,134	97.8	100.7	0.80	7.48	2/29/08	3/19/08	20
Limerick 2	1,134	99.5	91.0	0.81	6.76	3/23/09	4/11/09	20
McGuire 1	1,100	101.8	103.6	0.81	7.47	9/20/08	11/12/08	54
McGuire 2	1,100	12.2	94.0	0.10	6.77	9/6/09	10/10/09	35
Millstone 2	877	99.0	91.2	0.63	5.24	10/7/09	Current	20
Millstone 3	1,145	106.8	107.6	0.88	8.07	10/11/08	11/23/08	44
Monticello	572	100.0	76.8	0.41	2.88	3/15/09	5/6/09	53
Nine Mile Point 1	621	100.0	90.9	0.45	3.70	3/21/09	4/8/09	19
Nine Mile Point 2	1,140	99.8	99.5	0.82	7.43	3/21/08	4/16/08	27
North Anna 1	903	100.9	91.4	0.66	5.41	3/8/09	4/2/09	26
North Anna 2	903	100.6	100.6	0.65	5.95	9/13/08	10/26/08	44
Oconee 1	846	91.9	100.5	0.56	5.57	10/10/09	Current	17
Oconee 2	846	100.6	102.8	0.61	5.70	10/24/08	12/11/08	49
Oconee 3	846	101.4	91.1	0.62	5.05	4/25/09	5/20/09	26
Oyster Creek 1	619	100.5	88.4	0.45	3.59	10/24/08	11/18/08	26
Palisades	778	101.6	85.1	0.57	4.34	3/23/09	4/28/09	37



Unit	Net MWe	Capacity Factor (%)		Generation (BkWh)		Last Refueling Outage		
		Month	YTD	Month	YTD	Start Date	End Date	Outage Duration (Days)
Palo Verde 1	1,311	101.1	100.5	0.95	8.63	10/4/08	11/17/08	45
Palo Verde 2	1,314	100.8	101.3	0.95	8.73	10/3/09	Current	24
Palo Verde 3	1,247	105.6	84.1	0.95	6.87	4/4/09	5/27/09	54
Peach Bottom 2	1,112	100.8	102.3	0.81	7.45	9/14/08	10/18/08	35
Peach Bottom 3	1,112	36.3	89.6	0.29	6.53	9/14/09	10/12/09	29
Perry 1	1,245	100.9	66.3	0.90	5.41	2/23/09	5/11/09	78
Pilgrim 1	685	98.9	86.8	0.49	3.89	4/18/09	5/18/09	31
Point Beach 1	512	97.3	89.0	0.36	2.99	10/4/08	11/12/08	40
Point Beach 2	514	97.3	100.0	0.36	3.37	10/15/09	Current	12
Prairie Island 1	551	35.2	87.5	0.14	3.16	9/12/09	Current	45
Prairie Island 2	545	99.7	97.8	0.39	3.49	9/19/08	11/1/08	44
Quad Cities 1	867	88.9	85.9	0.55	4.88	4/27/09	5/22/09	26
Quad Cities 2	867	102.2	100.8	0.64	5.73	3/2/08	3/29/08	28
River Bend 1	970	60.9	96.4	0.43	6.13	9/21/09	10/17/09	27
Salem 1	1,174	99.2	99.0	0.84	7.62	10/14/08	11/12/08	30
Salem 2	1,130	100.0	103.7	0.81	7.68	10/14/09	Current	13
San Onofre 2	1,070	75.7	81.4	0.58	5.71	9/27/09	Current	30
San Onofre 3	1,080	103.2	104.1	0.80	7.37	10/12/08	12/17/08	67
Seabrook 1	1,245	99.5	99.9	0.89	8.15	10/1/09	Current	26
Sequoyah 1	1,148	99.2	85.1	0.82	6.40	3/27/09	4/27/09	32
Sequoyah 2	1,126	99.4	97.6	0.81	7.20	5/4/08	6/4/08	32
Shearon Harris 1	900	101.5	92.7	0.66	5.47	4/18/09	5/9/09	22
South Texas Project 1	1,280	100.5	104.0	0.93	8.72	10/1/09	Current	26
South Texas Project 2	1,280	62.6	99.4	0.58	8.34	10/4/08	11/4/08	32
St. Lucie 1	839	98.8	102.0	0.60	5.61	10/19/08	11/20/08	33
St. Lucie 2	839	32.2	67.4	0.19	3.70	4/27/09	6/12/09	47
Surry 1	799	100.4	92.0	0.58	4.81	4/19/09	5/10/09	22
Surry 2	799	100.8	101.1	0.58	5.29	4/26/08	5/20/08	25
Susquehanna 1	1,149	93.1	101.8	0.77	7.67	3/3/08	4/16/08	45
Susquehanna 2	1,140	93.0	83.1	0.76	6.21	4/7/09	5/15/09	39
Three Mile Island 1	786	104.9	105.9	0.59	5.45	10/21/07	11/20/07	31
Turkey Point 3	693	101.5	80.7	0.51	3.66	3/16/09	5/8/09	54
Turkey Point 4	693	100.7	100.7	0.50	4.57	3/30/08	5/9/08	41
V.C. Summer	966	100.6	101.0	0.70	6.39	10/17/09	Current	10
Vermont Yankee 1	620	98.3	98.3	0.44	4.00	10/19/08	11/9/08	22
Vogtle 1	1,109	64.1	101.2	0.51	7.36	9/21/09	10/17/09	27
Vogtle 2	1,127	100.3	103.7	0.81	7.66	9/14/08	10/19/08	36
Waterford 3	1,157	101.3	101.6	0.84	7.70	10/20/09	Current	7
Watts Bar 1	1,123	66.2	98.3	0.53	7.23	9/21/09	10/20/09	30
Wolf Creek 1	1,166	101.1	97.2	0.85	7.42	10/10/09	Current	17
Total	100,266	91.1	93.0	65.77	610.86			

Notes - Generation estimates are based on Nuclear Regulatory Commission (NRC) Monthly Operating Reports obtained through the Institute of Nuclear Power Operations and Energy Information Administration (EIA) 906 Forms. Capacity figures from the EIA are the Net Summer Capacities reported in the 860 Form. Capacity factors are calculated using EIA capacity and generation data, and NRC generation data.

Outage duration and start and end dates are only estimates based on publicly available data from the NRC. Numbers may vary from published press releases. Outage data current as of October 27, 2009.

Acronyms: B&W – Babcock and Wilcox, CE – Combustion Engineering, W – Westinghouse, PWR – Pressurized Water Reactor, BWR – Boiling Water Reactor, All BWRs are General Electric

Nuclear Performance is produced monthly by the Nuclear Energy Institute's Policy Development Division.

Mary Pietrzyk, Policy Research Analyst, 202.739.8142, mem@nei.org
 David Bradish, Manager, Energy Information, 202.739.8035, deb@nei.org
 James Slider, Director, Planning and Analysis, 202.739.8015, jes@nei.org