

After September Attacks, Record Numbers Favor Nuclear Energy, Consider Plants Safe

by Ann Stouffer Bisconti, Ph. D.

In the aftermath of Sept. 11, record numbers of Americans favor nuclear energy and consider today's nuclear power plants safe. A nationwide survey of 1,000 adults conducted Oct. 6-8, 2001, found higher support than ever before on three measures:

- ▶ Sixty-five percent favor the use of nuclear energy as one of the ways to provide electricity;
- ▶ Seventy-four percent believe nuclear energy should play an important role in our energy future; and
- ▶ Sixty-six percent regard nuclear power plants safe.¹

Patriotism, perception of need drive support to record levels

Support for nuclear energy historically has increased with disruptions in the Middle East and upturns in patriotic

sentiment. Also, while public concern about energy has declined since the price spikes and electricity shortages earlier in 2001, the public still believes that more electricity will be needed as our population grows.

Clean air, reliability of supply, and energy security all were given high priority for national energy policy in this survey. Many also said these three considerations are good reasons to use more nuclear energy.

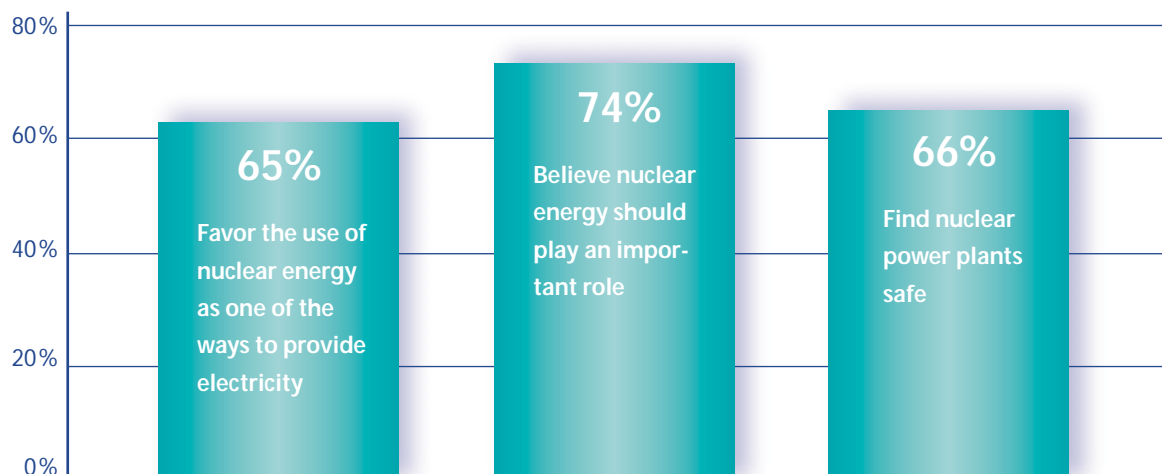
Majority supports new plants, relicensing existing ones

Fifty-nine percent agreed we should definitely build more nuclear power plants in the future, and 66 percent found it acceptable to build more nuclear power plants at the nearest existing plant site. Support for "defi-

nitely" building more nuclear power plants in the future is lower than the 66 percent measured in March 2001, when energy concerns peaked. But the acceptability of adding a new plant at the nearest existing nuclear power plant site has not changed.

Most Americans (84 percent) continue to support renewing the operating licenses for nuclear power plants that meet federal safety standards, and 72 percent agree with keeping the option to build more nuclear power plants in the future.

Record Levels of Support in 2001



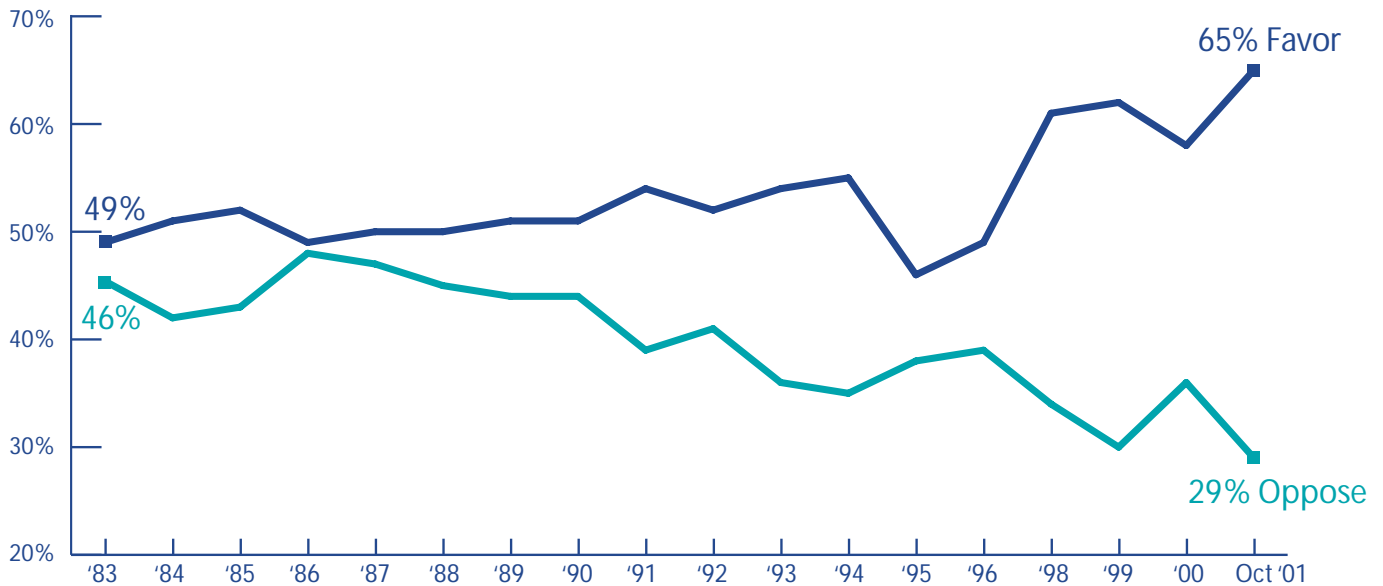
¹ The margin of error is plus or minus three percentage points. The survey was conducted by Bisconti Research, Inc. with Bruskin Research for the Nuclear Energy Institute.

Three Trends at Record High Levels

The October 2001 survey found record high levels on: 1) favorability toward nuclear energy, 2) perception of nuclear plant safety and 3) belief that nuclear energy should play an important role in America's future energy needs. The trends are shown below.

TREND ONE: Favorability to Nuclear Energy*

► *Question:* "Do you strongly favor, somewhat favor, somewhat oppose, or strongly oppose the use of nuclear energy as one of the ways to provide electricity in the United States?"



Strength of Favorability to Nuclear Energy

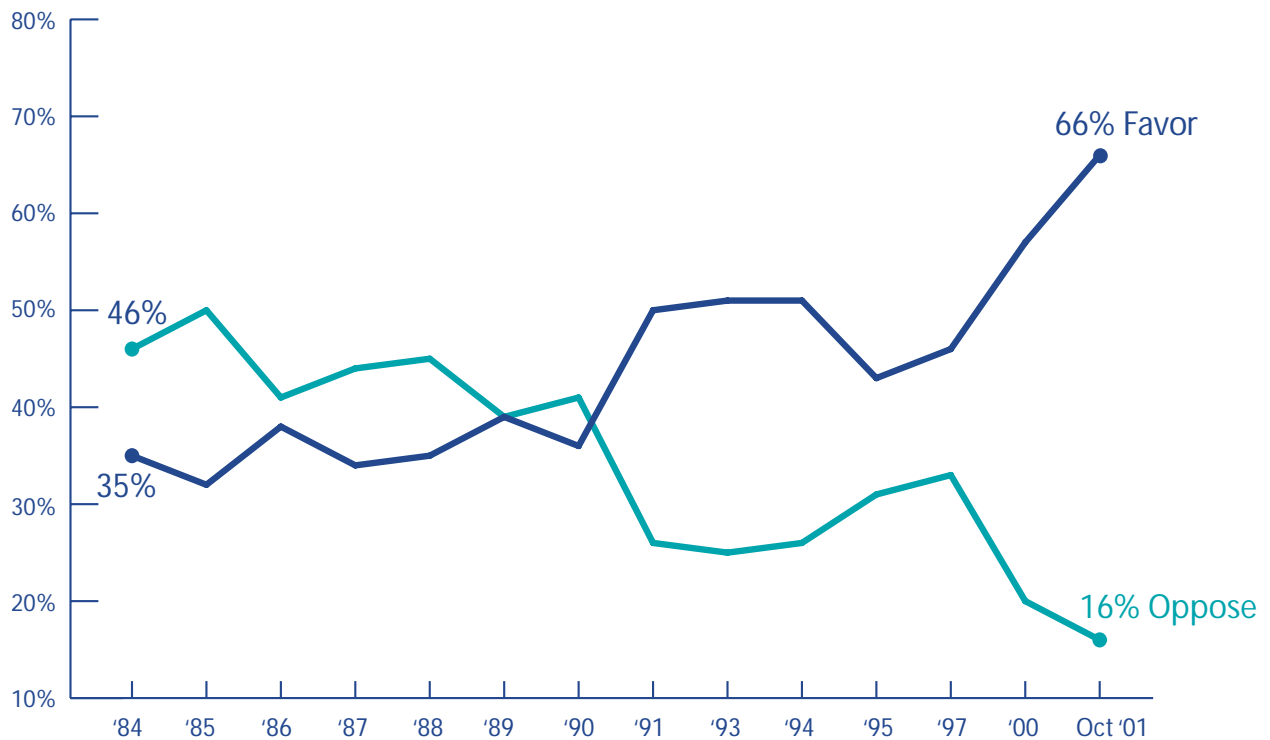
► *Question:* "Do you strongly favor, somewhat favor, somewhat oppose, or strongly oppose the use of nuclear energy as one of the ways to provide electricity in the United States?"

	November 2000 %	October 2001 %
Favor	58	65
Strongly favor	26	28
Somewhat favor	32	37
Oppose	36	29
Strongly oppose	16	14
Somewhat oppose	20	15
Don't know	6	7

* Annual averages, except for October 2001.

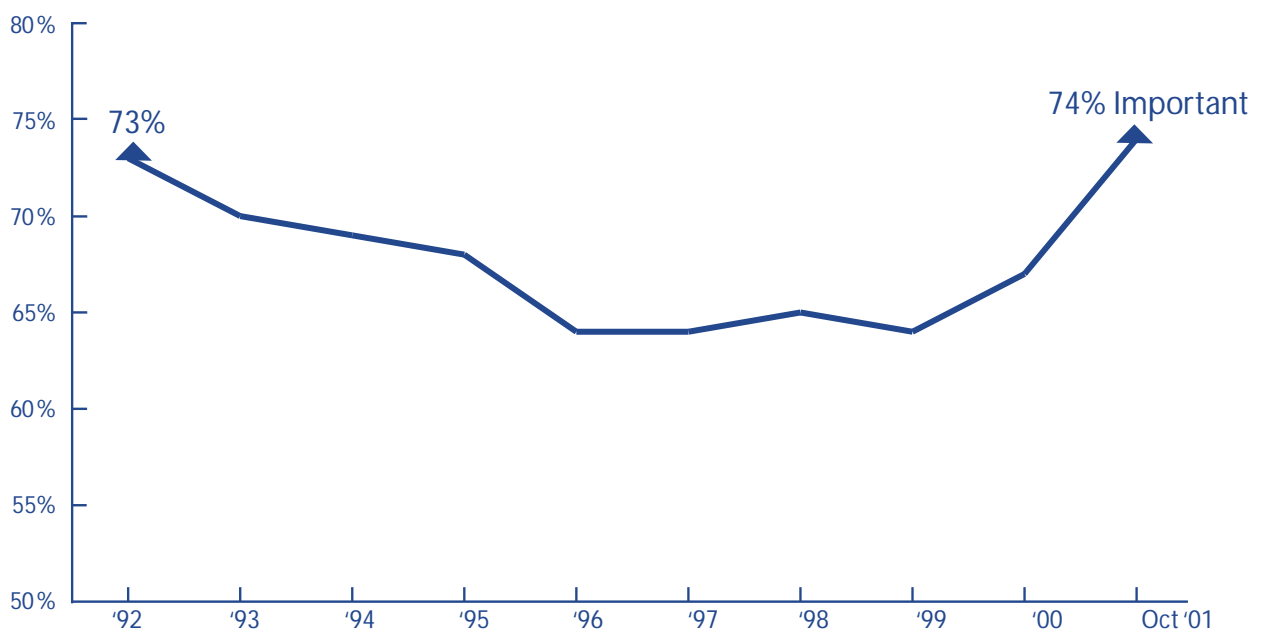
TREND TWO: Perception of Nuclear Power Plant Safety*

► *Question:* "Thinking about the nuclear power plants that are operating now, how safe do you regard these plants? Please think of a scale from 1 to 7, where 1 means very unsafe and 7 means very safe. The safer you think they are, the higher the number you would give."



TREND THREE: Percentage Saying Nuclear Energy Should Play an Important Role*

► *Question:* "How important a role should nuclear energy play in meeting America's future electricity needs? Should nuclear energy play a very important role, a somewhat important role, a not too important role, or not an important role at all?"

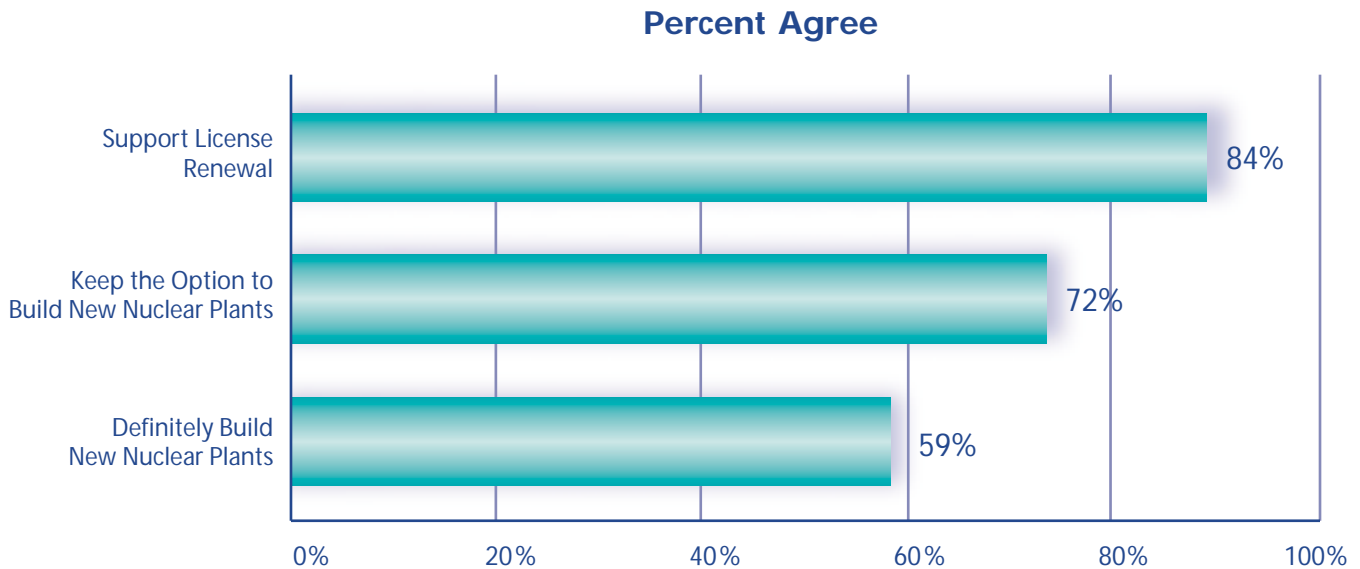


* Annual averages, except for October 2001.

Opinions About License Renewal and Building More Nuclear Power Plants

► *Question:* "Please tell me if you personally strongly agree, somewhat agree, somewhat disagree or strongly disagree with the following statements":

- When their original operating license expires, we should renew the licenses of nuclear energy plants that continue to meet federal safety standards.
- We should keep the option to build more nuclear energy plants in the future.
- We should definitely build more nuclear energy plants in the future.



Acceptability of Adding a Nuclear Power Plant at Nearest Existing Site

► *Question:* "If a new power plant were needed to supply electricity, would it be acceptable to you or not acceptable to you to add a nuclear power plant next to the nearest nuclear power plants that are already operating?"

Percent Acceptable

	July 2001	October 2001
All U.S. adults	64%	66%
Adults whose electric company operates nuclear plant(s)	71%	69%

For more information on public opinion about nuclear energy issues, please visit www.nei.org